

Zone 8 Regionalisation Pilot

Update for clubs and members,
August 2023



Regionalisation
Pilot

Jyoti, Rotarian since 2016.



From (now):



To (opportunity):

Small local projects connecting through personal contacts for local impact.

Collaboration

Multi district collaboration. Large scale projects. Large scale noticeable and measurable impact. National and regional partnerships.

Local and/or internal audience with limited reach.
So, people don't know who we are, what we do.

One voice

External audience. Large scale campaigns. National media. Wide reach. Partnerships.

Local support that's geographically based. Specialist expertise is difficult to access and not readily visible.

Club support

Clubs at the heart. Elected, motivating leadership. Connect clubs through affinity and commonality. Support for new membership models. Access to specialist support and partners.

Duplication of processes. Multiple and independent communications making information difficult to find.

Efficiency and technology

Automation of common processes. Common technology and better use. Ready access to information. Support for small clubs. Reduced costs.

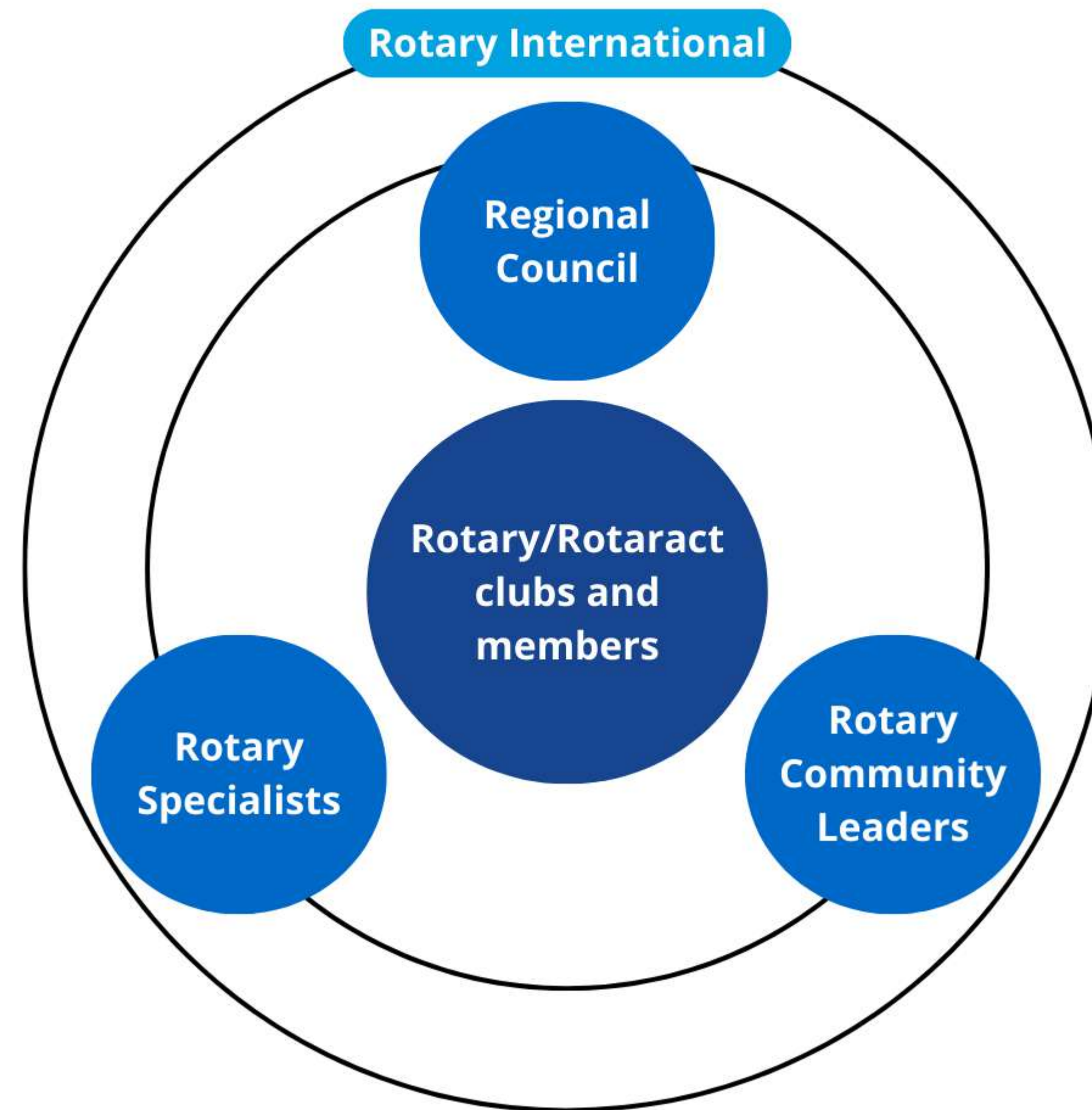
Traditional ways of operating. Too dependent on individuals. Annual turnover of leaders.

Innovation and adaptation

More support for new ideas. More leadership than management/administration. Adapt to new trends of volunteering. Longer term planning and roles.

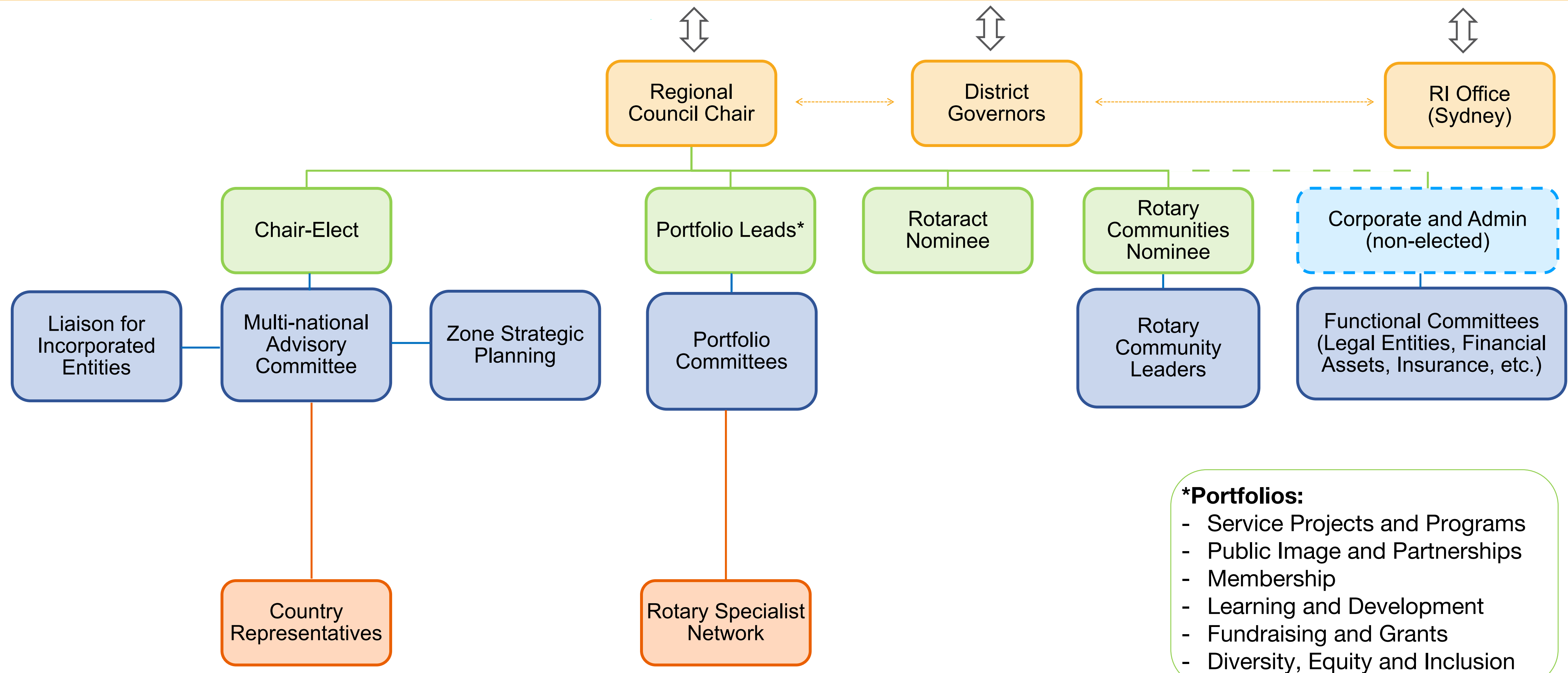
Pilot operating model

Proposed Regional Model

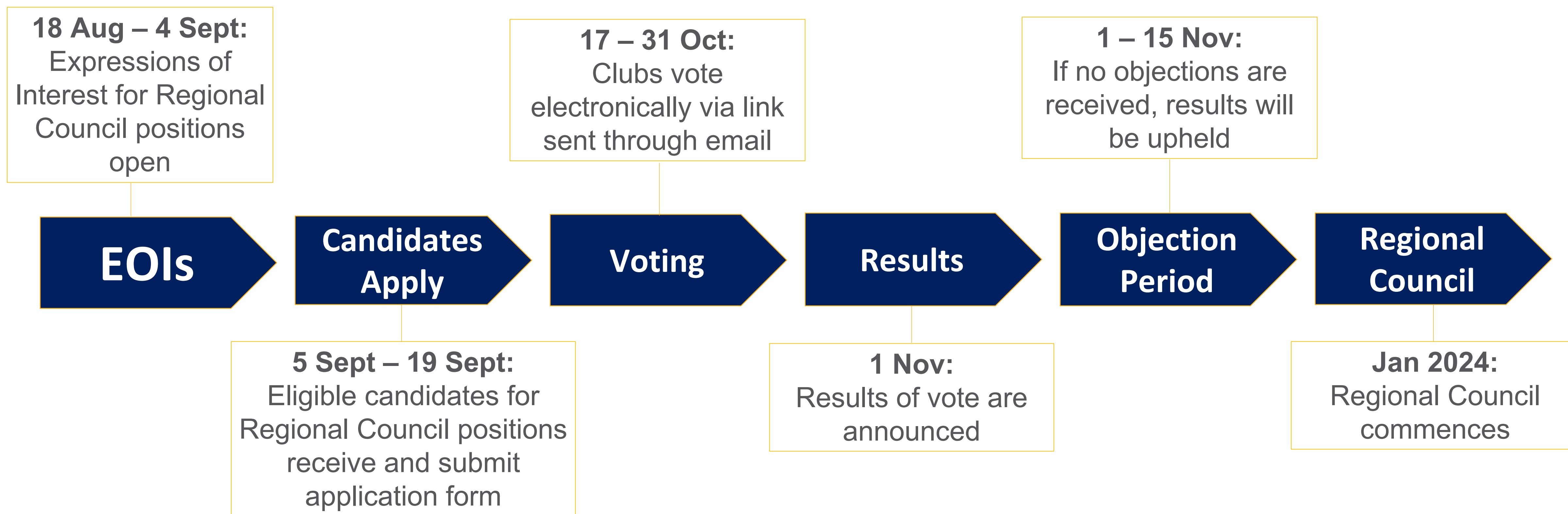


Regional Council structure

Rotary International (and The Rotary Foundation)



Regional Council election timeline



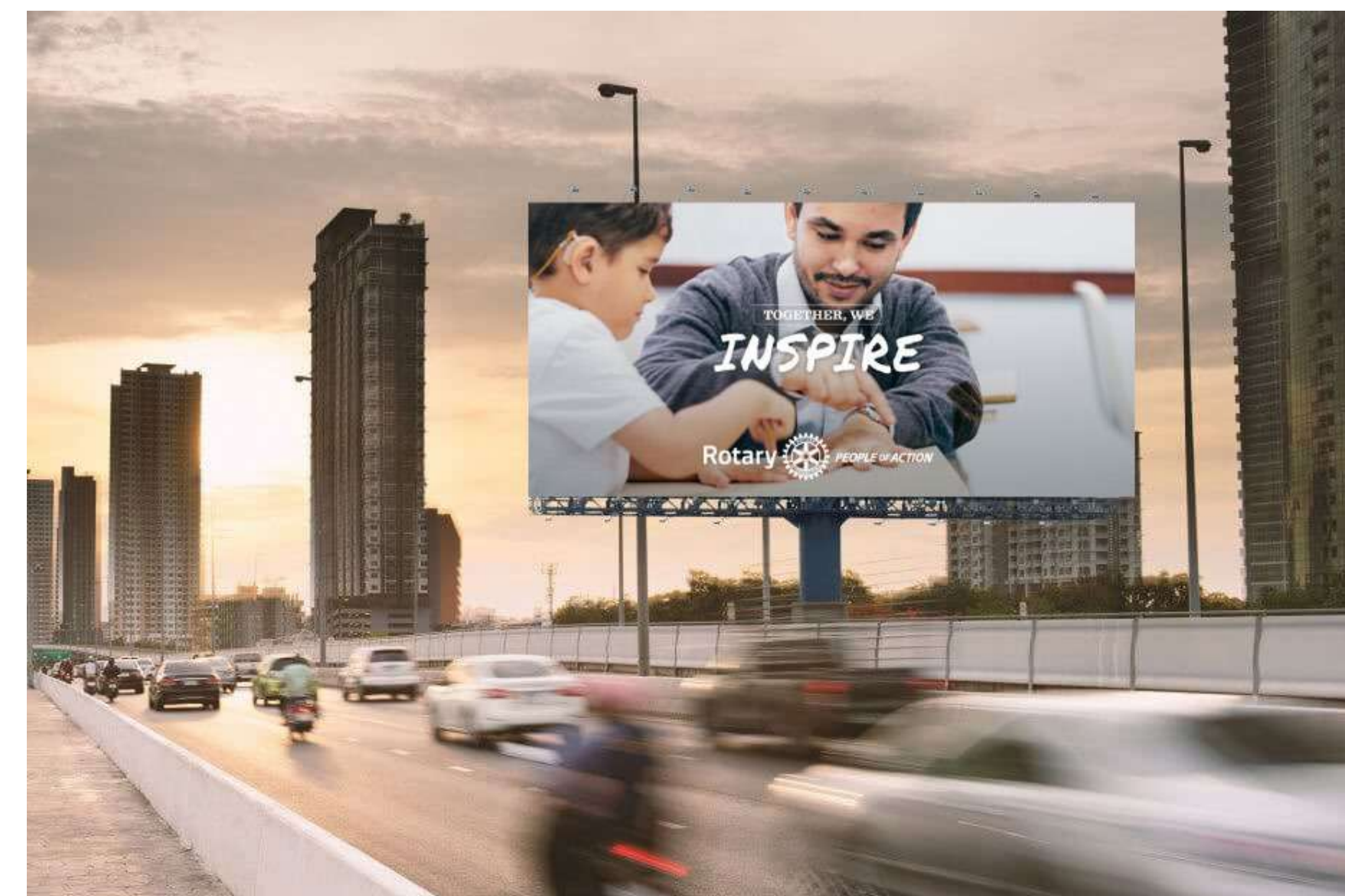
Rotary Community Groups (RCGs) and Leaders (RCLs)

- A new way of grouping clubs based on commonalities such as:
 - Geography e.g. a large area of spread-out clubs, a smaller area of close clubs
 - Type of club e.g. e-Clubs
 - Shared language e.g. French-speaking clubs
- RCGs can meet in person, online or a combination of both, and choose how often they meet
- Clubs can also nominate a secondary grouping that will operate through online networks across the Zone
 - Potential groupings include environment, youth, DEI, etc

Rotary Community Groups (RCGs) and Leaders (RCLs)

- Each RCG will elect their own RCL to facilitate their group and provide/access support for clubs
- Rotary Community Leaders will support clubs to:
 - Establish larger scale partnerships
 - Increase community impact
 - Build a higher public profile
 - Attract new club members
 - Increase club member engagement and satisfaction

Rotary Community Group Collaboration

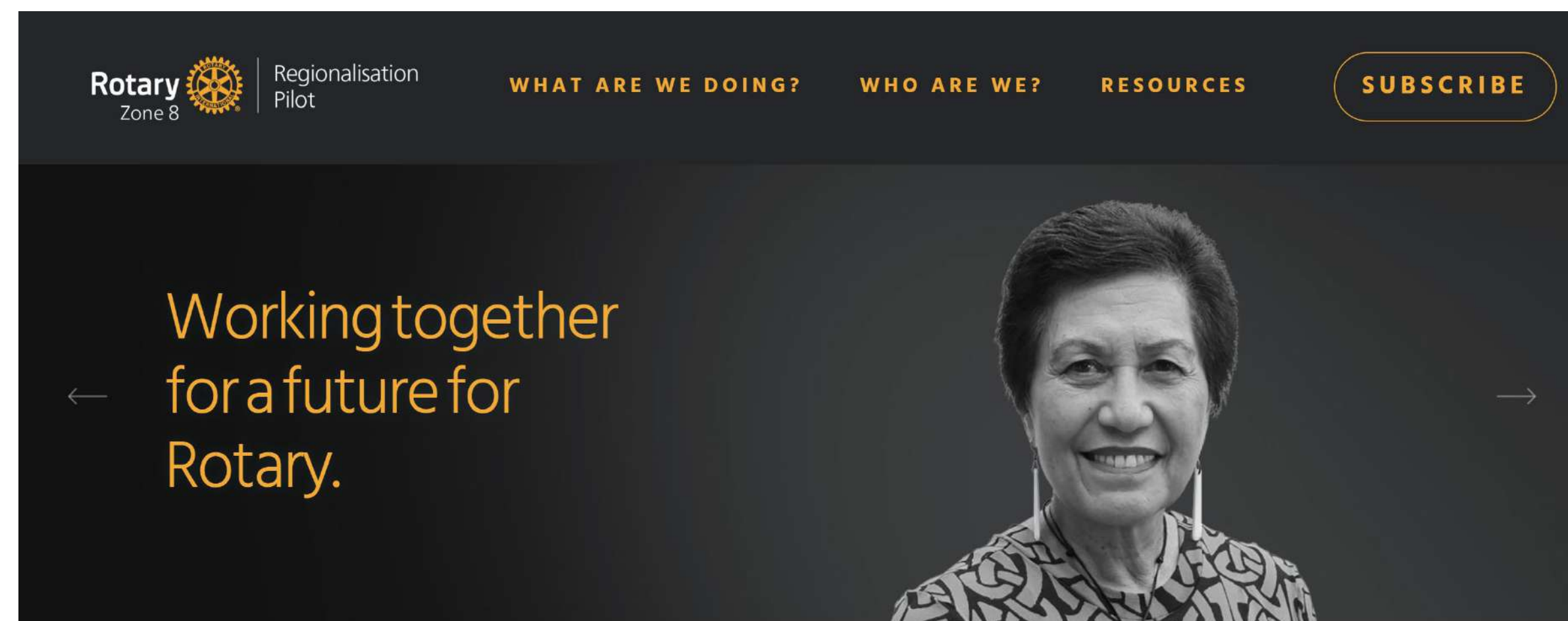


Rotary Community Groups (RCGs) and Leaders (RCLs) timeline



For more information

The *Creating Tomorrow* website is being updated regularly. For more information on the latest progress of the Regionalisation Pilot, visit CreatingTomorrowRotary.org



Latest updates.